



LCL service International Bulk Carrier With Competitive Shipping Rates For Bulk Cargo Shipping

Our Product Introduction

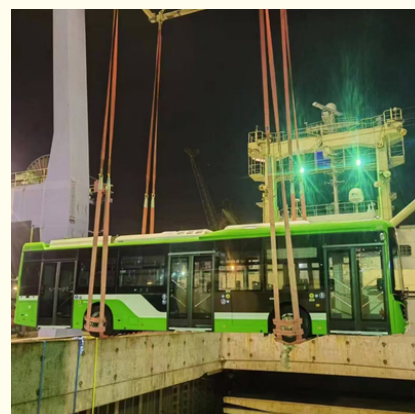
Basic Information

- Place of Origin: CHINA
- Brand Name: FSC
- Certification: NVOCC
- Model Number: OOG SHIPPING
- Minimum Order Quantity: 1 CBM
- Price: USD 50-200 per CBM
- Packaging Details: Nude cargo/General packages
- Delivery Time: Weekly vessel
- Payment Terms: T/T, Western Union, MoneyGram
- Supply Ability: 10000/CBM/Day

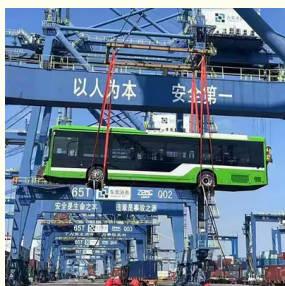


Product Specification

- Departure: ALL PORTS IN CHINA
- Shipping Type: RORO/Bulk/OOG Shipping
- Consolidation: Available
- Door To Door: Available
- Insurance: Available
- Export License: Available
- Customs Documents: Available
- Fumigation: Available
- Warehouse: Available
- Experience: Almost 20 Years
- Highlight: lcl service international bulk carrier ,
lcl international bulk carrier ,
lcl international bulk shipping



More Images



for more products please visit us on focusoog.com

Product Description

Shenzhen Focus Supply Chain is an international experienced professional freight forwarder and logistics provider operating on a global scale and providing comprehensive services for cargo of all descriptions which is approved by the Ministry of Commerce of China. We are specialized in FCL & LCL sea shipping, break bulk shipping, out of gauge shipping, project cargo shipping, RORO shipping and so on. Especially in out of gauge shipping, we can offer you a professional, integrated, customized and minimized cost shipping scheme with over the 16 years operation experience.

Shenzhen Focus Supply Chain had build good relations with MSK, CMA-CGM, COSCO, HPL, EMC, EUKOR, GLOVIS, MOL, KLINE, GRAMALDI and others carriers on China main port, such as **Qingdao, Tianjin, Shanghai and Ningbo, Shenzhen, Guangzhou**, the ocean freight we can get from Carrier are competitive and admired by customers.

FCL SHIPPING

Full Container Load means that all goods in the container are listed on a single Bill of Lading, and as such are owned by a single party. It does not matter how full the container is. Payment is made on the basis of a full container. We should pay attention on the way of stuffing containers and how to fasten the commodities.

FCL shipping is our general business, we can transport containers not only from Qingdao port, but also from Tianjin/ Dalian/ Shanghai/ Ningbo/ Shenzhen/ Guangzhou port, meantime, we have handled multitudinous commodities with our 16 year experience safely and skilfully, including equipment, chemicals, dangerous cargo (such as battery, pesticide), furniture, petrol drill, truck, used equipment, iron rolls and so on.

LCL SHIPPING

LCL refers to cargoes owned by different shippers, grouped in a single container by the forwarding agent, allowing transportation

of smaller volumes of cargo without paying for a full container; this is more cost effective for smaller shipments which cannot utilize a full container.

Our fees are transparent and standardized. We can shown the destination charges on the BL. For LCL service needed client, pls be

careful, we remind you not only to compare the ocean freight, but also the destination charges, then you can make a reasonable decision.

OOG SHIPPING

Including Frame container shipping, open top container shipping, about this kind of service, The size and photo of the commodity

should be offered by shipper, then we can work out the minimized cost and totally safe scheme within 2 hours. About this kind of

containers, we must pay attention on the commodity fasten and bundles.

OOG Shipping from China Expert to Worldwide.

OOG shipping is the short of out of gauge shipping, include the frame container shipping, open top container shipping, flat container shipping and so on. Open top container mainly transport the over-height commodities or it is not easy to stuff or discharge conventional container, such as large machinery, large equipment, metal pipes, glass and other commodities.

Flat containers (Frame containers) mainly transport the over-width /over-height/overweight commodities. Such as petro equipment, boiler, steel, truck, and so on.

BBK SHIPPING

It is suitable for all over-length, over-width and over-height commodity, it use 2 or more flat rack containers as bed. Such as engineering machinery, petrol equipment, mining equipment, truck and so on.

BBK shipping is one of our company highlights business, that is combined number of flat containers into a pallet then put the commodities on it. Under normal circumstances, if the size of the goods is too large (width and height is more than 4M, the length is more than 12M) to block the hanging point, or the weight (container weight plus cargo weight is more than 50T) beyond the pier gantry crane range is too dangerous, that we can choose BBK shipping. For the oversize and overweight commodities. There is two

ways to transport such commodities, one is bulk shipping, another is break bulk shipping we mentioned above. Compare to bulk

shipping. The ETD of BBK shipping is stable, the operation procedure is much more simple, the safety of commodities is higher, and

the ocean freight is much more reasonable.

Procedures

1. We will contact your supplier to arrange the picking-up & loading.
2. We will navigate customs clearance and deliver the goods on-board the vessel.
3. We will issue the invoice and the copy of bill of lading to you for payment.
4. We will release the original bill of lading to you or your shipper once receiving the payment.
5. We will send you weekly report on working day to keep you updated with the status of your shipment.

Why choose us

1. We have rich experience in shipping over 16 years
2. We provide sea freight services from main ports all over China to arrange your shipments.
3. We offer consolidation services to reduce your shipping costs, with the assured 7-day free storage in our warehouses.

4. We assume the responsibility of packing and repacking to maximize the space utilization and minimize the potential damage.
5. We can take care of quality control or product inspection if needed.
6. We are devoted to tackling the last-mile challenge. So the door-to-door delivery service is an available option for you.
7. Handling relevant insurance is our field of expertise, too.
8. We assist in the preparation of required documentation such as fumigation and certification of origin.
9. We also carry out drop shipping services to help grow your business, with all your key corporate information held in confidence.







Shenzhen Focus Supply Chain Co., Ltd.

+8615814074322

mike.guo@focusoog.com

focusoog.com

Room 1209, Block B, Baihe Commercial Building, Xiangge Road, Buji Street, Longgang District, Shenzhen, China, 518112

